

10 YEAR MANUFACTURER'S

LIMITED WARRANTY

All parts of this Kingston Brass faucet are warranted to the original retail purchaser to be free from defects in material and workmanship for a period of Ten(10) years from the date of purchase as shown on the purchaser's receipt.

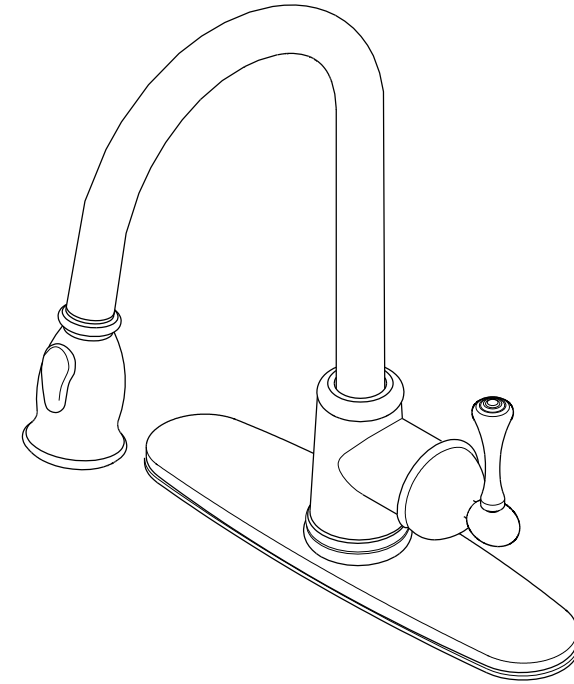
This warranty is limited to defective parts only, labor charges and/or damage resulting from improper installation, repair or replacements, as well as incidental and consequential damages connected therewith are excluded.

Any damage to this faucet as a result of misuse, abuse, neglect, accident, or improper installation or any use not consistent with the instructions furnished by us, will void this warranty.

Replacement parts can be obtained from your local dealer. Freight cost is not covered by manufacturer.

CAUTION!!!


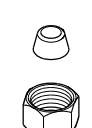
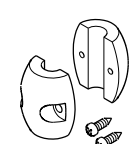
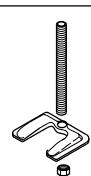
1. Water lines must be completely flushed before use, to avoid debris & clogs in your water system leading to mal-function and reduction of water flow.
2. Warranty is void if water lines are not flushed before use of a new faucet.
3. Use of abrasives of any strength may damage the finish of your faucet and void this warranty.



PROBLEMS SHOOTING

PROBLEM	CAUSE	CORRECTIVE ACTION
Leaks underneath handle	Bonnet nut has come loose	Remove the handle and tighten the bonnet nut
Leaks from the spout	Valve seat and spring are worn	Replace the valve seat and spring
Inconsistent water flow pattern	Aerator is dirty or aged	Release aerator and check on rubber gasket if aged or replace with a new aerator
Faucet is dirty	Caused by stubborn water spot	Clean with mild soap and warm water as often as possible
Handles work backward	Handle installed backward	Rotate the right stem stop assembly 180 degrees

Parts:

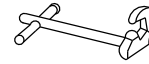
Bolt & Lock Nut	Cone Washer & Coupling Nut	Counterweight Set	Bolt & Brass Nut & Metal Washer
 2 Pcs	 2 Pcs	 1 Pc	 1 Pc

www.kingstonbrass.com

TOLL-FREE CUSTOMER SERVICE: 1-877-2-KBRASS
 TECHNICAL SUPPORT E-mail: service@kingstonbrass.com
 12775 Reservoir Street, Chino, CA91710

INSTALLATION INSTRUCTIONS For Use With KB's Pull-Down Kitchen Faucet

Need Tools:



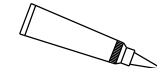
Basin Wrench



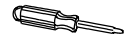
Adjustable Wrench



Teflon Tape



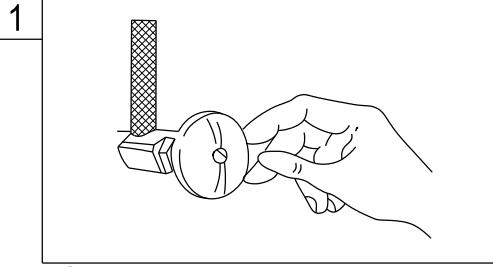
Silicone Sealant



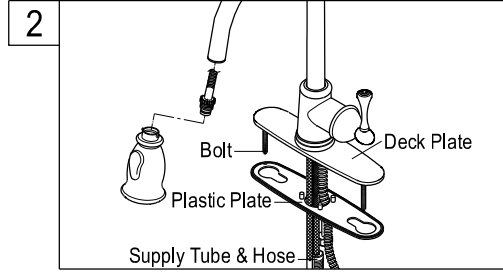
Screwdriver

BEFORE BEGINNING INSTALLATION

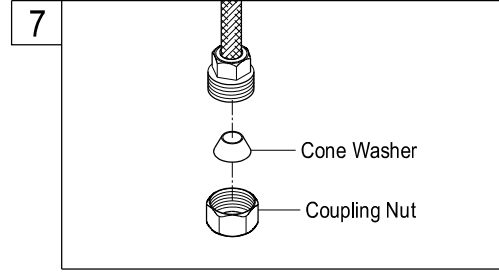
1. Flush plumbing lines to clear any debris.
2. Shut off both supply lines after flushing.



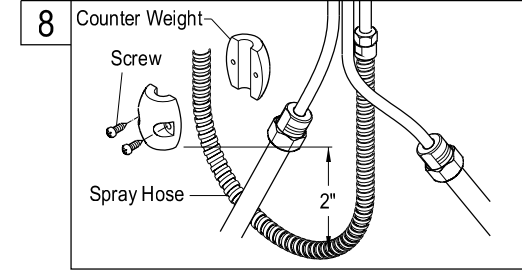
1. Shut off hot and cold water supply under sink. Plug sink drain with cloth to avoid losing small parts. Remove old faucet.



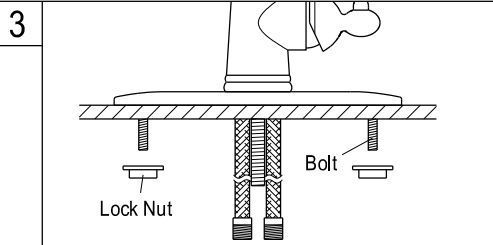
2. Place deck plate in proper position, put hose and supply tubes through center hole of deck plate. Install hold down studs onto brass deck plate by sliding stud into the notched receptacle on the base plate. Place plastic plate under the deck plate smooth side down.



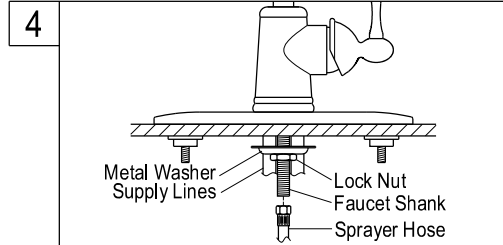
7. Place the cone washer into the coupling nut as shown in the above illustration, and then connect. **HAND TIGHTEN ONLY, AND BE CAREFUL NOT TO OVER TIGHTEN.** One full wrap of Teflon tape is required on all threaded connections. **Caution:** Do not let the tubing revolve or bend when tightening.



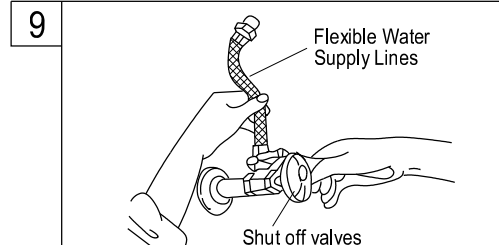
8. Install counterweight set on the spray hose. Adjust the counterweight at least 2" higher than the bottom line as illustrated. Fix with screws tightly.



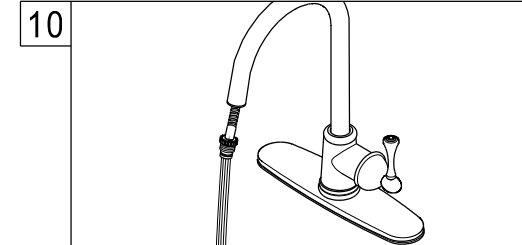
3. Fit faucet onto the sink. Secure faucet by threading and tightening wing-nuts onto studs. **NOTE:** Hand tighten the nuts and be careful not to over tighten.



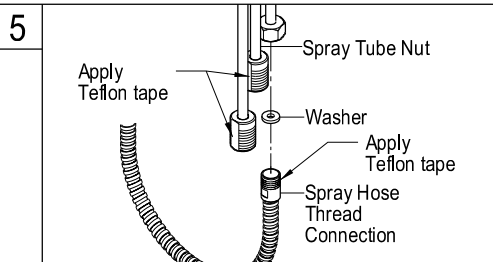
4. Pull the stainless steel hose up through the faucet until the attachment nut is up against the bottom of the faucet shank. Install rubber washer and metal washer on the faucet shank and secure with brass nut, tighten wrench tight. (Have patience when slipping the brass nut past the water tube connections, it will fit past them.)



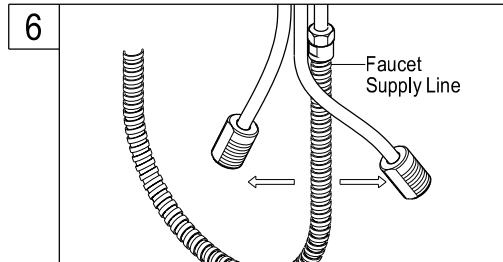
9. Apply Teflon tape to threads on faucet shank and shut off valves, connect water supply line.



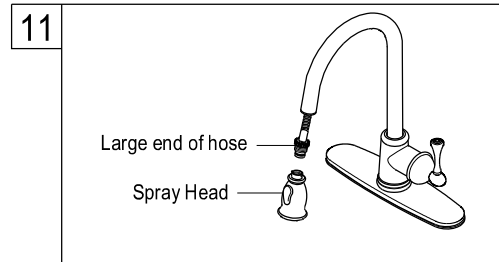
10. Pull the spray hose through the spout and secure the end into the drain, or have a secure party hold the spray hose, and turn on the faucet and flush for one minute.



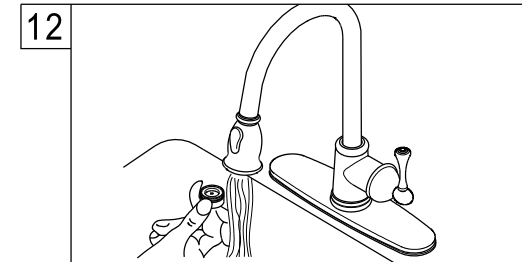
5. Wrap Teflon tape on the spray hose thread connection and connect the spray hose to spray tape and secure with spray tube nut. Tighten with wrench carefully. **NOTE:** Be sure there is a washer inside the spray tube nut before connecting the spray hose to the spray tube.



6. **Note:** If faucet supply lines need to be bent, grip tube at point of bending with tight hand, firmly and slowly pull tube into position using rounded bend with left hand. Extreme care must be exercised. Follow instructions exactly. Kinked tubes will void warranty.



11. Attach spray head to the large end of the stainless steel hose. Insert spray head onto faucet body.



12. If properly installed and maintained, this quality product will provide you with years of trouble-free operation.

